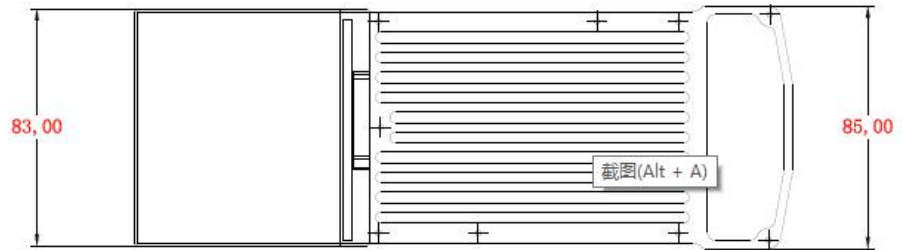
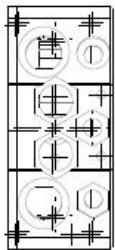
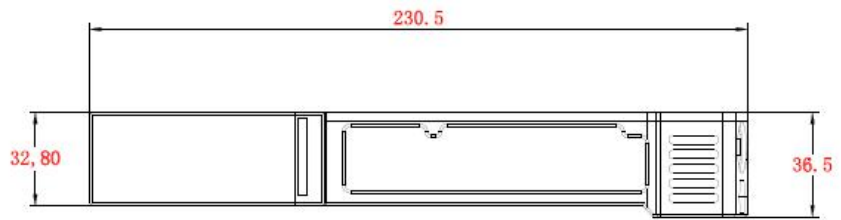


NexFi MV580WB Specification

BASIC SPECIFICATIONS	
Interface	100Mbps Ethernet (Cable Connector for AERO)
	TNC*2 (MESH) SMA*2 (WIFI+GPS)
	Audio (Cable Connector for AERO)
	Switch, volume control
LED indicator	4 levels of network quality indication
	4 levels of Battery Indicator
WIFI Specification	580Mhz MIMO MESH
	2.4Ghz WIFI
Output Power	27 dBm *2 @580Mhz
Receive Sensitivity	-95dBm
Channel Bandwidth	5Mhz/10Mhz/20Mhz
Rate	MAX 80Mbps
Location	GPS
Audio	Decentralized multi-hop speech/ PTT
PERFORMANCE SPECIFICATION	
Mode	MESH
Hop	>10
Node Scale	>20
Boot Time	<1 minute
Connecting Time	<500ms
Switching Period	<100ms
Encryption	AES 256
PHYSICAL SPECIFICATION	
Size	230*83*36mm (Battery included)
Weight	1KG (Battery included)
Antenna	2dBi Omni Antenna (20cm)
Battery	15V 3400mAh
Power Consumption	5~20W
Temperature	(-20°C~65°C)
Working Humidity	10%~90%
Mounting	Portable / Hand-held

Outline Dimensional



PCB Dimension

