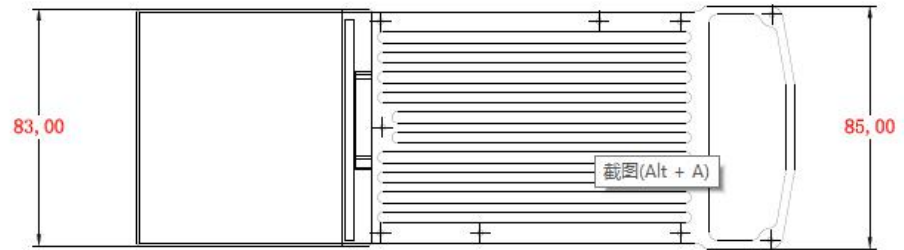
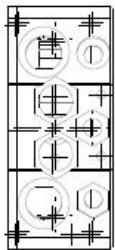
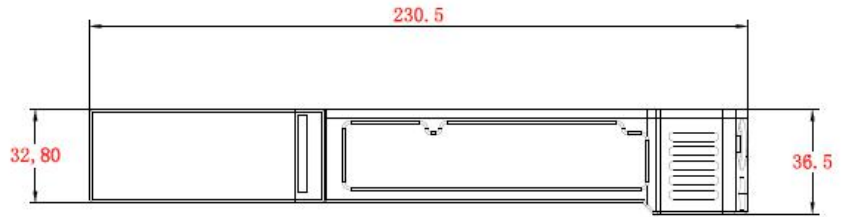


## NexFi MV1400WB Specification

| BASIC SPECIFICATIONS       |   |
|----------------------------|---|
| <b>Interface</b>           | 100Mbps Ethernet (Cable Connector for AERO) |
|                            | TNC*2 (MESH) SMA*2 (WIFI+GPS)               |
|                            | Audio (Cable Connector for AERO)            |
|                            | Switch, volume control                      |
| <b>LED indicator</b>       | 4 levels of network quality indication      |
|                            | 4 levels of Battery Indicator               |
| <b>WIFI Specification</b>  | 1.4Ghz MIMO MESH                            |
|                            | 2.4Ghz WIFI                                 |
| <b>Output Power</b>        | 30 dBm *2 @1.4Ghz , 27dBm@2.4Ghz            |
| <b>Receive Sensitivity</b> | -95dBm                                      |
| <b>Channel Bandwidth</b>   | 5Mhz/10Mhz/20Mhz                            |
| <b>Rate</b>                | MAX 80Mbps                                  |
| <b>Location</b>            | GPS   |
| <b>Audio</b>               | Decentralized multi-hop speech/ PTT         |
| PERFORMANCE SPECIFICATION  |   |
| <b>Mode</b>                | MESH  |
| <b>Hop</b>                 | >10   |
| <b>Node Scale</b>          | >20   |
| <b>Boot Time</b>           | <1 minute                                   |
| <b>Connecting Time</b>     | <500ms                                      |
| <b>Switching Period</b>    | <100ms                                      |
| <b>Encryption</b>          | AES 256                                     |
| PHYSICAL SPECIFICATION     |   |
| <b>Size</b>                | 230*83*36mm (Battery included)              |
| <b>Weight</b>              | 1KG (Battery included)                      |
| <b>Antenna</b>             | 2dBi Omni Antenna (20cm)                    |
| <b>Battery</b>             | 15V 3400mAh                                 |
| <b>Power Consumption</b>   | 5~20W                                       |
| <b>Temperature</b>         | (-20°C~65°C)                                |
| <b>Working Humidity</b>    | 10%~90%                                     |
| <b>Mounting</b>            | Portable / Hand-held                        |

## Outline Dimensional



## PCB Dimension

